

# Garava Typeface

ABC  
DEFGHIJ  
KLMNOPQR  
STUVWXYZAB  
CDEFGHIJKLMNO  
PQRSTUVWXYZABC  
DEFGHIJKLMNOPS

## HEAVY

**Bold Headings**

***Bold Italic Text***

*Italic Type Style*

Regular Body Font

PETITE CAPS & BOLD

CAPS TO PETITE CAPS

Underline ~~Strikeout~~

Àçcêh̄t̄s Symbols

►”~\*~\*~\* ΑΨΔΥΛΦ

Greek αβγδζηικλ ρς

Super 456

Subscripts 789

ƒ€ƒt̄sR̄s̄Œ̄€̄ Ł̄ ¼̄N̄º

TEL̄īFAX̄ 1/3̄1/5̄1/6̄1/8̄7/8̄

IV IX C ii viii xi m

(E)(N)(C)(L)(O)(S)(E)(D)

Ligatures: off fit fly office afflict

The sticky Ritz COOKS Quipped

HELP MEN FIT TWO LAMPS UP

The aspicious wq if straight.

OldStyle: £12,345,678.90

IN NOVA FERT animus  
mutatas dicere formas  
coeptis (*nam vos mutastis  
et illas*) adspirate meis erat  
primaque ab origine chaos  
mundi ad tempora endem  
carmen naturae! {16}

Ante mare et terras et quod tegit  
omnia caelum unus erat toto  
naturae vultus in orbe, quem  
dixere chaos: rudis indigestaque  
moles nec quicquam nisi pondus  
iners congestaque eodem non bene  
Quinctarum discordia semina  
adspirate meis erat rerum. {12}

**N**ULLUS adhuc mundo  
praebebat lumina Titan, nec  
nova crescendo reparabat  
cornua Phoebe, nec circum-  
fuso pendebat in aere tellus ponderibus  
librata suis, nec brachia longo margine  
terrarum porrexerat discordia semina meis  
erat Amphitrite; utque erat et tellus illic  
et pontus et aer, sic erat instabilis tellus,  
innabilis unda, lucis undas abscidit egens  
aer; nulli sua forma manebat, obstabatque  
aliis aliud, quia corpore in uno frigida  
calidis, umentia siccis, mollia duris, sine  
pondere, habentia pondus. {10}

**H**ANC DEUS et melior litem  
natura diremit. Nam caelo terras  
et terris abscidit undas et liquidum  
spisso secrevit ab aere caelum.  
Quae postquam evolvit caecoque exemit  
acervo, dissociata locis concordia pace ignea  
convexi vis et sine pondere caeli emicuit  
summaque locum sibi fecit in arce; proximus  
est aer illi levitate locoque; densior his tellus  
gravitate sua; circumfluit umor ultima  
possedit solidumque coeruit orbem. {9}

Sic ubi dispositam quisquis fuit ille deorum  
congeriem secuit sectamque in membra coegit,  
principio terram, pondere locoque circumfluit umor  
ne non aequalis ab omni concordia pace ignea  
convexi vis et sine parte foret, magni speciem  
possedit summaque locum glomeravit in orbis. {8}

Tum freta diffundi rapidisque tumescere ventis iussit et ambitae  
circumdare litora terrae; addidit et fontes et stagna immensa lacusque  
fluminaque obliquis cinxit declivia ripis, quae, diversa locis, partim  
sorbetur ab ipsa, in mare perveniunt partim campoque recepta  
liberioris aquae pro ripis litora pulsant. {6}

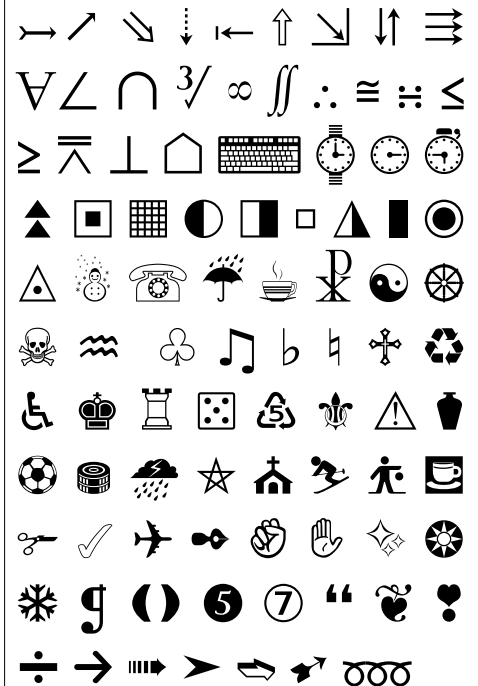
Garava was designed for body text in Buddhist Publications. A full range of Latin character sets means it can be used for Pali, Sanskrit, Romanised Indic scripts, many European languages, and Vietnamese. Line spacing for 10 point text is 12 points.

A full Greek character set, and a wide range of symbols extend its usefulness to other academic fields such as maths and science. Maths and currency symbols are designed on the figure width, while other symbols, arrows, and geometric shapes are a uniform width and align with the Caps height wherever the design permits.

Superscripts align with the tops of figures, and subscripts bisect the baseline. There are ordinals both for lowercase — 1<sup>st</sup>, 2<sup>nd</sup>, 3<sup>rd</sup>, 1<sup>ème</sup> 2<sup>o</sup>, 3<sup>ú</sup>, 16<sup>ths</sup> and for CAPS 25<sup>TH</sup>.

Stylistic Alternates give quick access to a few symbols from the text context toolbar. E.g. type \*+@ to choose from: \*+TEL \*+FAX \*+☎ \*+✉ or \*+✉✉

The font includes a full set of arrows, symbols, dingbats, and stacking fractions for measurements: 7<sup>3</sup>/<sub>8</sub>” or 1/8 etc. A selection of the many symbols included are shown below:



Some dingbats can be accessed using the Ornaments feature. Type 123 ABC abc etc.



GARAVA VERSION 2.5 has undergone a significant redesign. The spacing of old documents may have changed very slightly, but most of the changes are cosmetic. Serifs are lighter, while bold and heavy typesets now have more contrast between thick and thin strokes. The Small Caps styles have been dropped since the four basic type styles all have Petite Capitals glyphs with Open Caps features. The heavy typeface has no glyphs for Petite Caps or Ordinals, as it is not a body text type style. The other four styles all have a full set of ordinals and superscripts. {4}